



ACROBAT M Motorized Treadmill

Operating Instructions Manual



Special tips:

1. Before installation and operation, please read this operation manual carefully.
2. Please save this manual for future reference.

Table of Contents

| | | |
|----|---|-------|
| 1 | Brief Description..... | 2 |
| 2 | Main Technical Features..... | 2 |
| 3 | Tips for safety..... | 3-4 |
| 4 | Installation..... | 4 |
| 5 | Use and Operation..... | 4-6 |
| 6 | Maintenance..... | 6-8 |
| 7 | Guides for malfunction..... | 8-9 |
| 8 | Exploded Diagram and Spare Part List..... | 9 |
| 9 | Error and self-inspection..... | 10 |
| 10 | Installation Sketch..... | 11-12 |

1. Brief Description

ACROBAT M motorized treadmill (diagram 1) can help complete your goal of keeping fit together with unique and elegant appearance. Easily read panel parameter. Easily operated folding system realizes space-saving. Auto speed range 1-14km/h. All makes it a hot home use fitness equipment.

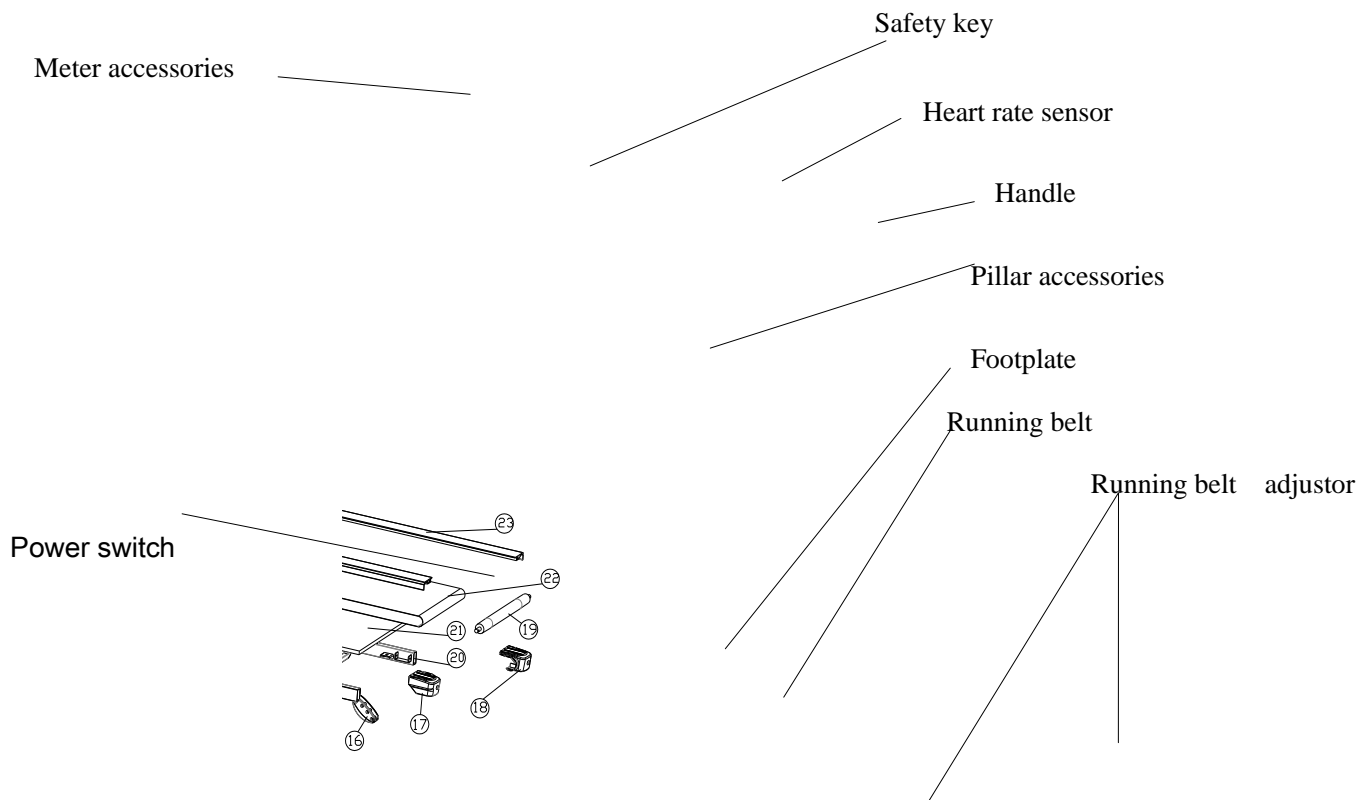


Diagram 1

2. Main Technical Features

Main use: Body and beauty building

This treadmill is for home use

Panel displays speed, time, distance, heart rate, calorie etc.

Display Mode: LCD

Input voltage: 220V-240V

Frequency: 50HZ

Temperature for working: 0~40°C

Speed range: 1~14km/h

Program: Time display range: 0:00~99:59(minute : second);

Distance display range: 0.1~99.99kms

Machine size (L*W*H):: 1520x720x1260 (mm)

N/W: 59KGS;

3. Tips for Safety

3.1 Insert the power plug into the socket directly. Current load should be less than 10A.

3.2 The constant running time is less than 2 hours.

3.3 Place your treadmill on the clean floor, not on the thick carpet, otherwise it will not be convenient for ventilation. Also please don't put the treadmill in the moist place or outdoors; If there is something wrong with the electrical wire, please replace it with the electrical wire provided by our company. For the replacement, please contact with the local distributor.

3.4 The treadmill should be placed in the convenient position for electric socket.

3.5 The freshman should grip the handrails when jogging and running until familiarly. Please don't stand on the running belt, after the machine is power on (the safe key is at the appointed position). Please stand on the footplates besides the treadmill, press the "start" button, it runs at the lowest speed, at this time you can run on the belt.

3.6 While running, you should dress properly. Don't dress too loosely in case your clothes are entangled by the machine. And please wear sport shoes with soft sole.

3.7 Before taking down the protecting cover of the treadmill, please keep the machine is power off.

3.8 Don't let children and non-sporters get close to the running treadmill to avoid unnecessary injury.

3.9 Please make sure one end of the safe key has been placed in the appointed position and the other one has been nipped to your clothes when you are running on the machine. In this way, you can pull the safe key for the machine's sudden stop under the dangerous condition. Then you will not be injured.

3.10 If you are enjoying other entertainment while running such as watching TV, reading. Please be particularly careful. These activities will distract your attention, which may make you lose your balance and get hurt.

3.11 Please pull the plug off from socket and keep the safe key, when the treadmill is unused.

3.12 Please don't put anything under treadmill and don't let your children play near it after folding.

3.13 Please consult your doctor at first before running, if you have one of the following diseases.

a) Cardiopathy, hypertension, sugar diabetes, respiratory disease, smoking, and other chronic diseases, complication disease.

b) If you are over 35 years old and heavier than common weight.

c) Women in pregnant or in breast period.

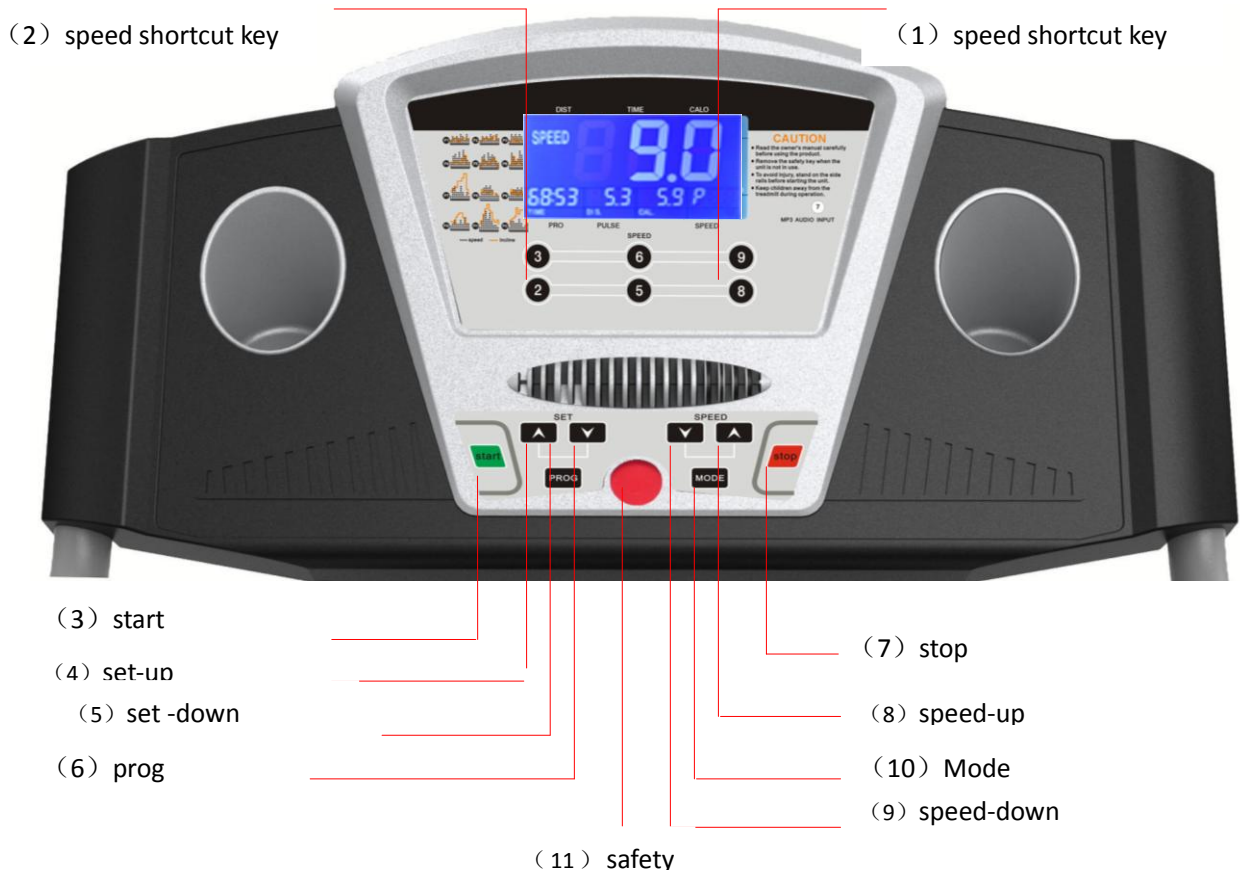
3.14 Please stop exercising immediately and consult your doctor if you're feel giddy, surfeit, thorax ache or other symptoms.

3.15 Please drink adequate water after taking exercises on our treadmill for more than 20 minutes.

4. Installation: See “Installation sketch”

5. Use and Operation

5.1 Panel Keys and Function



(1) “speed shortcut key”

Press this key,you could get your expected speed directly

(2) “speed shortcut key”

Press this key,you could get your expected speed directly

(3) “start”

Under ready condition, press this key, it runs at the speed of 1.0km/h.

(4) “set up”

Under the “mode “condition, we only could press the “set up “key to up speed

(5) “set down”

Under the “mode” condition, we only could press the ”set down” to down the speed.

(6) “PROG”

Under ready condition, press this key to choose running program。 There are P1-P12.

(7) “stop”

Under running condition, press this key, if it runs at speed more than 3.5km/h, it will slow down firstly and finally to stop. During this stopping process, other keys are not available.

If you runs at the speed less than 3km/h, then the treadmill will stop immediately.

(8) “speed up”

Under running condition, press this key, speed can be increased to the one you expected

(9) “speed down”

Under running condition, press this key, speed can be speeded down to the one you expected.

(10) “Mode”

Under ready condition, press this key to set time, distance and calorie accordingly. Press “set-up” or “set-down” keys to set the value of time, distance and calorie. Then press “start” key, the machine will run at 1.0km/h. And the set figures will be counted down, when it comes to “0”, machine stops.

(11) “safety key”

Under urgent condition, pull out this key, machine stops immediately.

5.2 Unload operating

1. Insert power plug into the socket with earth wire, turn the switch to “on” position which is on the frame
2. Put the safe key in the right position, then circuit is on, press “start”, keep it run in unload condition. Test the condition of running belt (testing from low speed to high ones), after testing, press “stop”.
3. If everything is ok, then start to run.

5.3 Meter operating instruction

5.3.1

1. Insert power plug into the socket with earth wire, turn the switch to “on” position which on the back of the motor cover. Place the safe key to the appointed position. After a few seconds, panel will show that the machine is ready.
2. Nip another end of safe key to your clothes, and stand on the footplate on both sides.
3. Press “start” key, running belt moves at the lowest speed (1.0km/h). Speed windows will display your running speed.
4. Start to run.
5. Press speed key to adjust speed, speed window will display your speed.
6. To end your exercise in a safe way, please first press “stop” key to close the treadmill. Please leave the running belt until it stops slowly. Turn off the power.

5.3.2 Heart Rate Testing

Our treadmill can test your heart rate via the heart rate sensor. The data is only for reference.

5.4 Folding and Opening Treadmill

5.4.1 Folding

Firstly lift and fold the back part of the frame board by hand till you hear a light sound, which means the folding system has been locked. At this time running board can't be turned to the opposite direction

5.4.2 Opening

Put the folded treadmill in a capacious position when you want to run. Then pull the adjusting parts by hand to keep it is unlocked. Press the back part by your hands down to about 10%, release it, then it will open automatically.

6. Maintenance

6.1 Identification ways for the degree of tightness of running belt and poly V-belt.

When the running belt skips, please follow the steps as follows to make sure which belt needs to be adjusted, running belt or poly V-belt.

- a) Cut off power, screw off the bolt on cover of protection. Then take down the protecting cover from the treadmill
- b) Turn the speed to be around 3km/h, step on the running belt by pressure and try your best to make the running belt stop. If running belt stops, together with the front roll, but the motor still runs, under this condition, it means the poly V-belt needs to be adjusted.
- c) Turn the speed to be around 3km/h, step on the running belt by pressure and try your best to make the running belt stop. If running belt stops, but front roll still runs, under this condition, it means the running belt needs to be adjusted.

6.2 The adjustment steps for poly V-belt

Cut off power firstly and take down the cover of protection.

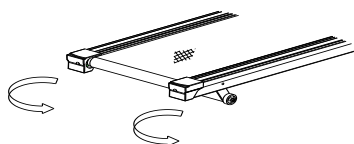
- a) Loosen the four screws for the motor, turn the adjustable screw(there is one screw specially for adjust) a circle by clockwise, then screw down the four loose screws.
 - b) Keep the power on, and adjust the poly V-belt is loose or not following the point 6.1 above and too see if the v-belt is tight enough, if need to tight again, please repeat the action same to point a) above.

6.3 Adjustment steps for running belt

- a) Turn the speed to be 5.6km/h. for running
- b) Turn the bolts at both right and left sides to be half a circuit or a circuit by the 8mm spanner. (diagram1 and diagram 2)
- c) After adjustment, running belt still skips, please repeat the steps above.



Tighten the running belt(diagram 1)



loosen the running belt(diagram 2)

6.4 The adjustment steps for running belt deflection

The running belt will be deflected more or less under using. Then it needs to be adjusted. The steps are as follows:

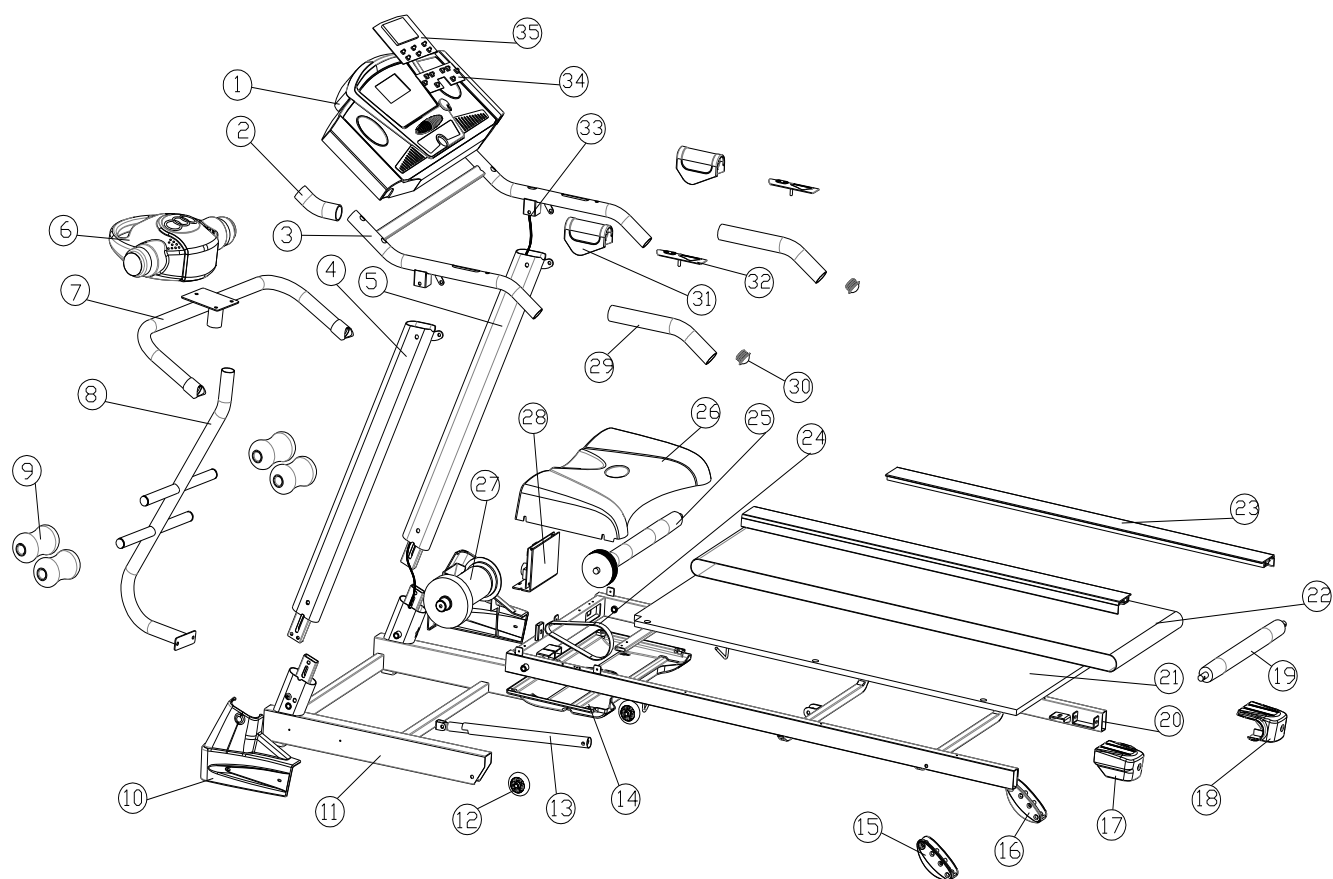
- a) Place the treadmill on a horizontal floor, turn the speed to be 5.6km/h.for running.
- b) If the running belt is deflected to the right, adjust the bolt on the right by turning it for half an

7.1 Analyzing and eliminating malfunction

| Item | Malfunction | Reasons | Solution |
|------|---|--|--|
| 1 | Treadmill can't be started | The safe key isn't in the right position | Put the safe key in the right position |
| | | The electrical switch is placed to "off" | Turn the electrical switch to "on" |
| | | creepage switch is not right | Replace creepage switch |
| 2 | Meter can't display | The meter control line and control panel are unconnected | Pull the bolt out and open the motor cover and reconnect it |
| | | | Turn on the meter and reconnect |
| 3 | Heart rate can't be displayed | The pole of heart rate sensor is not wet enough | Wet the pole with water or liquor for hard contact lenses |
| | | Disturbed by electromagnetism | Stay away from electromagnetism |
| 4 | Incline doesn't work | The motor wire is not well connected | Open the motor cover and reconnect it |
| 5 | Running belt runs faster or slower than what has been displayed | Unadjusted | Readjust it |
| 6 | Running belt slips | Running belt is not tight enough | Please read point 6.3 Adjustment steps for tightening running belt for reference |
| 7 | Running belt is deflected | The running belt is unadjusted. | Please read point 6.4 The steps for adjusting the deflected running belt for reference |

7.2 If you still can't solve the problems after taking the solutions above, we hope that you can contact our dealer or company as soon as possible.

8. Exploded Diagram



Spare Parts

| Part No. | Description | Quantity | Part No. | Description | Quantity |
|----------|---------------------------|----------|----------|----------------------------|----------|
| 1 | Computer casing (plastic) | 1 | 19 | Rear roller | 1 |
| 2 | Rubber hand grips | 2 | 20 | Treadmill frame | 1 |
| 3 | Handrail frame | 1 | 21 | Running deck | 1 |
| 4 | Holder-left | 1 | 22 | Running belt | 1 |
| 5 | Holder-right | 1 | 23 | Side strip | 2 |
| 6 | massage | 1 | 24 | Drive belt | 1 |
| 7 | Massage fixator | 1 | 25 | Front roller | 1 |
| 8 | Massage holder | 1 | 26 | Motor cover | 1 |
| 9 | foam | 4 | 27 | motor | 1 |
| 10 | Decorative plastic -left | 1 | 28 | Motor control board | 1 |
| 11 | Motor underframe | 1 | 29 | Rubber hand grips | 2 |
| 12 | wheel | 2 | 30 | pipe stopper | 2 |
| 13 | Gas spring | 1 | 31 | Handrail plastic | 2 |
| 14 | Bottom plastic plate | 1 | 32 | Handrail heart rate sensor | 2 |
| 15 | Manual incline-left | 1 | 33 | Main connector | 1 |
| 16 | Manual incline-right | 1 | 34 | Key board | 1 |
| 17 | End cap-left | 1 | 35 | Upper control board | 1 |
| 18 | End cap -right | 1 | | | |

9 Error and self-inspection

9.1 Error :Treadmill gives the following error code if anything wrong ,please contact service people soon if it happens

| Error Code | Reason |
|-------------|--|
| E-01 | Didn't detect signal from the speed indicator. |
| E-02 | The Voltage is overload and exceed the marked (volt) |
| E-03 | The motor is overload and exceed the marked (amps). |
| E-04 | Incorrect connection between main motor and control panel |
| E-06 | Poor connection between the display and controller. |
| E-07 | Safety key of electronic meter has been placed off. |
| E-09 | Incline self-inspection failure |
| E-0P | Speed self-inspection failure |
| E-0C | Poor connection of motor wire to <u>controller</u> , damaged IGBT or defective circuit of power relay. |

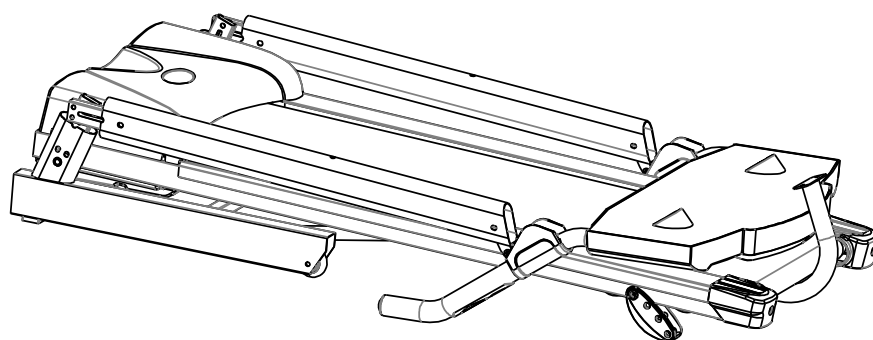
9.2 Self-inspection

No need to self-inspect unless special situation. If necessary, please do it under the instruction of professional technical people or sales because of the high voltage.

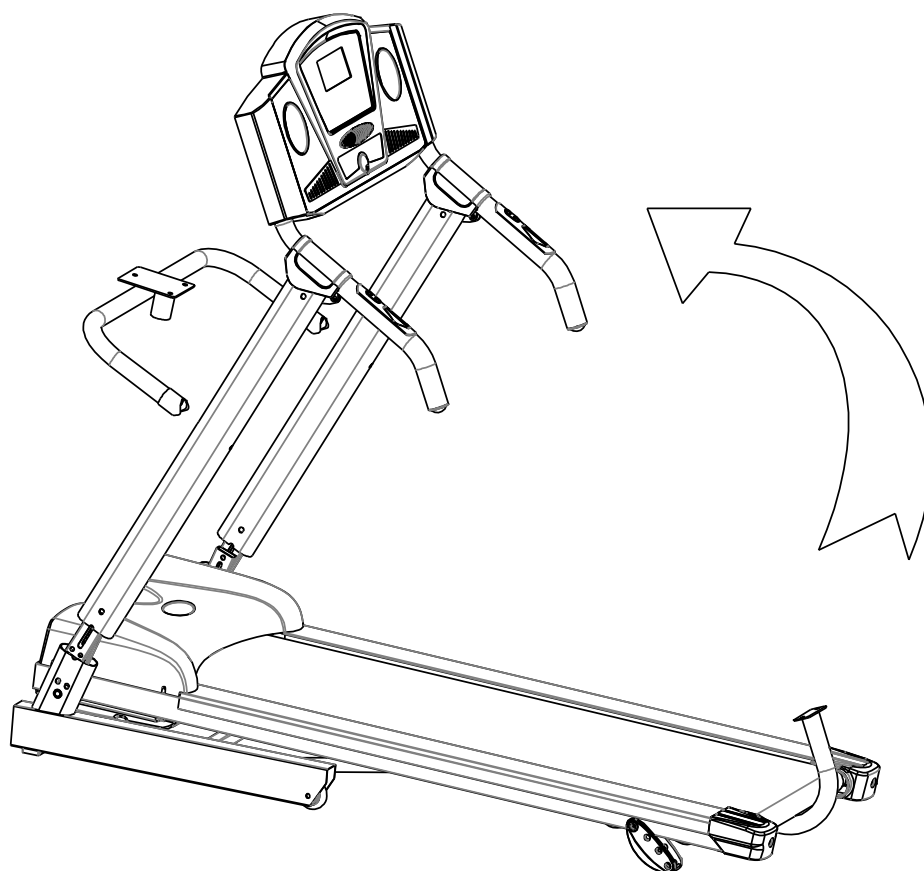
- open the red power switch, pull out the safe key
- Press the "start" and "speed +" key at one time until the safe key has been put on,then press the "mode" key
- after the LCD display finished, then press the "mode" key again.
- the treadmill runs from the lowest speed to highest speed , Then treadmill stopped.

The whole self-inspection process takes about 2 minutes

Assembling 1



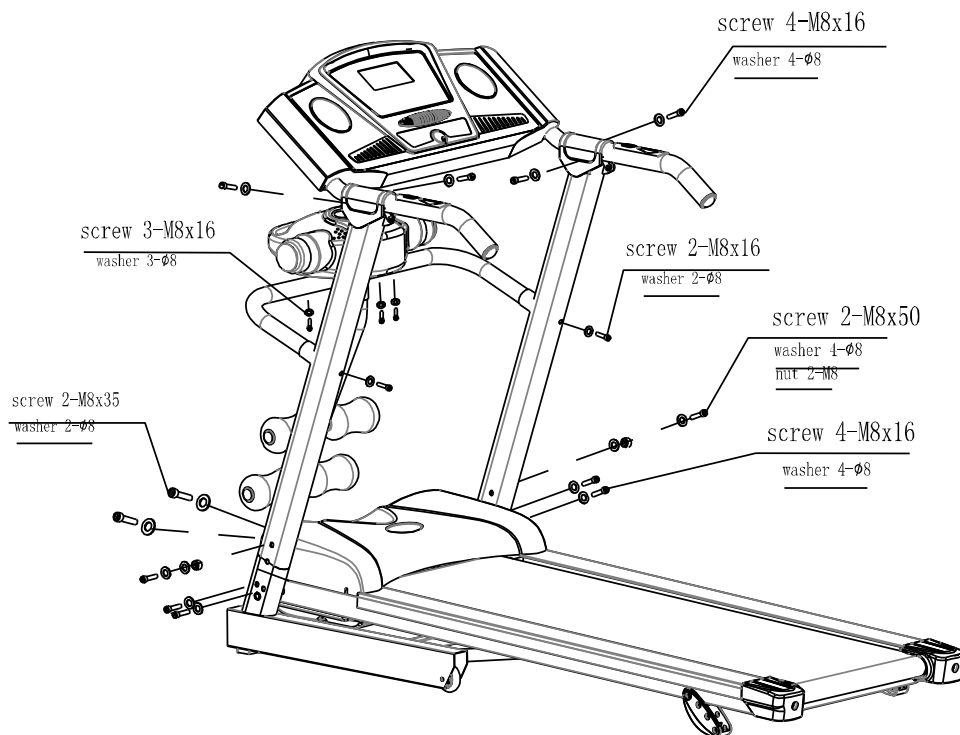
①



②

Assembling 2

3



4

